

CAVIUS

HEAT ALARM

THE WORLD'S SMALLEST

WIRELESS.
ALARM FAMILY



10 YEAR
BATTERY
INCLUDED
NON-REPLACEABLE

PLEASE READ THIS USER GUIDE CAREFULLY



CAVIUS Heat Alarm

Part Code: 3107 CAVTH10WF

Model: 3107

Recess Kit Part Code: 11014

**PLEASE READ THE USER GUIDE CAREFULLY BEFORE
INSTALLATION AND RETAIN FOR FUTURE USE.**

For large text option and maintenance guide visit

cavius.co.nz/support or cavius.com.au/support

Contents

Technical information	2
The best areas to install a heat alarm	4
Areas where NOT to install heat alarms	5
Placement	6
To access the heat alarm	7
How to set up and connect alarms	8
Installation of heat alarm	10
Test function	14
Normal mode	16
Alarm mode	16
Hush function	17
Add extra device	18
Low battery indicator	19
Functional Information	20
Warranty	22

TECHNICAL INFORMATION

The heat alarm has been designed to be installed in conjunction with smoke alarms as part of a fire safety system. A heat alarm should never be installed in lieu of or as a replacement for a smoke alarm.

The CAVIUS heat alarm detects and will siren when either the following occurs:

- Rapid increase in temperature level
- Absolute heat level of 58°C

The maximum number of CAVIUS Wireless Family alarms and devices that can be interconnected within a house group are 32 alarms.

Please note: These must be alarms or devices from the CAVIUS Wireless Family range.

The distance between interconnected alarms depends on the house layout and they should always be tested after installation. It is not advised to be more than 10m distance between two alarms.

Diameter: 78mm

Height: 44mm (standard) and 19mm (recessed)

The alarm is powered by two 3v lithium batteries (sealed and non-replaceable).

Interconnected by RF: 926.365 MHz

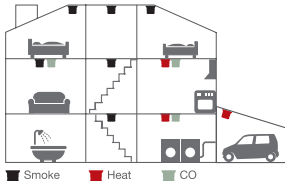
Complies to standards: BS 5446-2:2003 / EN54-5 class A1.



Alarm condition aural signal pattern according to ISO 8201.

1. The best areas to install an alarm:

- Install alarms on each floor of the house, in hallways and stairways.
- Alarms in each room such as bedrooms and living rooms.



2. Areas where NOT to install heat alarms:

- Bedrooms
- Lounge
- Dining room
- Hallway
- Family room

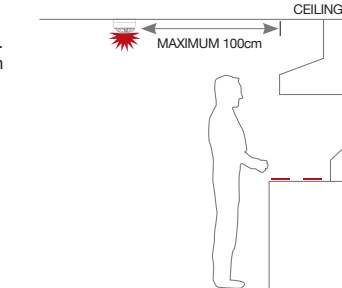
NOTE: Heat alarms are designed to be installed in areas where flaming fires occur over smouldering fires.

3. Placement:

The heat alarm is area specific. The alarm should be placed on the ceiling and near where the potential fire risks may occur.

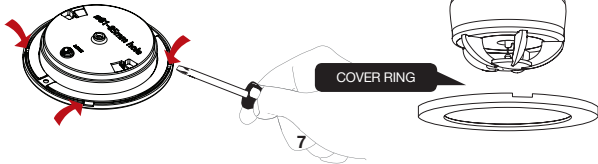
Never install directly above the oven / hob / stove.

For kitchen installation:

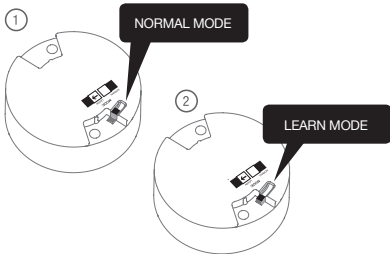


4. To access the heat alarm:

To remove the heat alarm from the Recess Kit base; click off the Cover Ring, using your fingernails or a flathead screwdriver, via the four indents located on the rim of the Cover Ring and Recess Kit Base.



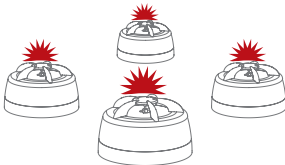
5. How to set up and connect alarms:



Press the button on the top of one alarm only. This alarm will become the 'Master' and will start sending out a specific house code to the other alarms (take note of which alarm is the 'Master', you may need this for adding extra devices in future). The red LED will flash.



As the other alarms receive the specific house code, they will also flash the LED light.



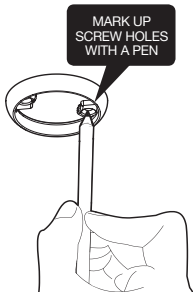
When all alarms flash the red LED, they are connected and can be switched out of 'Link Mode' and installed.

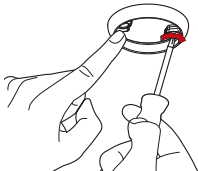
6. Installation of heat alarm:

Info: The label on the product must not be removed due to important information.

Option 1 – Standard base

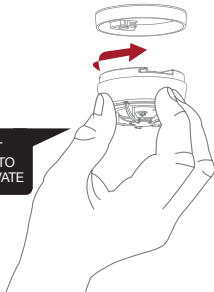
1. Use the mounting base ring to mark the screw holes on the ceiling.





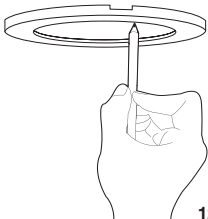
USE THE
ENCLOSED
SCREWS AND
PLUGS FOR
INSTALLATION

CLICK THE HEAT
ALARM FIRMLY INTO
THE BASE TO ACTIVATE



Option 2 – Recess Kit

1. Place the Cover Ring on the area where you wish to install the heat alarm, trace around the inside of the ring.

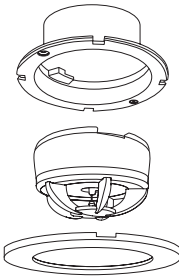


**HOLE SAW
DRILL REQUIRED.**

81mm – 85mm

2. Using your hole saw (81mm – 85mm), cut a hole into the surface.

CAUTION: Ensure there is no wiring or any electrical equipment behind the surface you are drilling your hole into.



INSERT RECESS KIT
MOUNTING BASE INTO
THE HOLE AND SECURE
WITH SCREWS

CLICK THE HEAT ALARM
FIRMLY INTO
THE BASE TO ACTIVATE

PLACE COVER RING
AROUND THE RECESS
KIT MOUNTING BASE

7. Test function:

After installation, and at least once per quarter, test all of your alarms to ensure they are operating correctly and are within range of each other.

It is recommended to check visually every week if the LED flashes correctly (every 48sec.)

Press the test button on any alarm for at least 6.5 seconds (count 2 sets of 3 sound sweeps). This will send out a test signal from the alarm; all other connected alarms should receive the signal within a short time. The alarms will emit a short beep and the LED will flash every 8 seconds for 2 minutes.

When the test signal is sent out, the alarms will respond in two ways:

1. A single beep every 8 seconds indicates that the alarms are connected and functioning.
2. Three short beeps every 8 seconds indicates a heat sensor fault.
Please do not try to clean the heat alarm with a damp cloth or vacuuming, as there is a chance you can damage the thermistor.

Once the alarms have indicated they are interconnected; the beeps can be stopped on each alarm with a short press of the test button.

If any problems occur during testing, visit www.cavius.co.nz or www.cavius.com.au for further trouble shooting.

8. Normal mode:

In normal mode the LED will flash every 48 seconds to show the alarm is functioning.

9. Alarm mode:

When a rapid and constant change of temperature is detected, the heat alarm will go into 'Alarm Mode'. It will sound the alarm signal and the LED will flash. Please note that only the source alarm's LED will flash, so it can be identified.

The heat alarm will also transmit the alarm signal to the other connected alarms, which will also sound the alarm signal after a short delay.

10. Hush function:

If the heat alarms are to set into a false alarm by cooking, fireplace, etc. all of them can be paused for 10 minutes by pressing the hush button on the originating alarm only (indicated by the flashing LED).

You can hush each alarm individually, however the source alarm will continue to sound until hushed.

The reason for this is that it is necessary to locate the source of the alarm before using the hush function. This is to make sure that it is not a life threatening situation.

11. Add extra device:

All CAVIUS interconnected alarms within the



range can be added to the system as they run on the same frequency and use the same data protocol. This means that the wireless system can consist of a combination of smoke alarms, heat alarms, and security products.

Just place the 'Master' and new device into 'Link Mode', repeat Section 4.

Always test connection to all devices by repeating the test function (Section 7) after adding devices.

The 3107 CAVTH10WF can be used with the 9005 CAVSR remote for testing and hushing the alarm.

Low battery indicator: Your product has a 10 year battery life.

When the battery is starting its end of life, a short beep will sound out every 48 seconds for 30 days.

The alarm effected by the low battery will only beep, no other connected alarms will sound.

Always test the heat alarm after clicking into the mounting base, allow 5 seconds before testing.

FUNCTIONAL INFORMATION

Type of alarm: CAVIUS heat alarm is a heat alarm.

Alarm signal: Fire alarm activation is indicated by a series of repeated tones. The minimum sound level is 85 dB at 3 metres.

Battery: Powered by two 3v lithium batteries (sealed and non-replaceable).

Please dispose of the alarm properly at the end of life at an e-waste recycling facility.



10 YEAR
BATTERY
INCLUDED
NON-REPLACEABLE

Developed & Manufactured by:

Carrier Fire & Security Danmark A/S,
Ellekær 9A, 2. Th, DK-2730, Denmark

cavius.com – info@cavius.com

Manufactured in China

Distributor information:

for New Zealand - CAVIUS Nano Ltd.

58A Poplar Lane, Papamoa 3187, NZ. **www.cavius.co.nz**

for Australia - CAVIUS Australia PTY Limited

PO Box 6126, Yatala, QLD 4207, Australia. **www.cavius.com.au**

Warranty:

CAVIUS provides a 10-year warranty against defect in faulty material and workmanship from the date of purchase, on all devices.

The warranty applies to reasonable and normal conditions of use only. It does not include damage as a result of misuse, incorrect installation, accidental damage, neglect, unauthorised deconstruction or dismantling and any airborne or other contamination however this may have occurred.

If this product has an acknowledged defect it must be returned to the national CAVIUS Distributor at the purchasers cost with the proof of purchase.

If the product has become defective within the 10 year warranty, Carrier Fire & Security

Danmark A/S will repair or replace the unit without charge and send back to the purchaser, via the national Distributor at the Distributors cost.

The guarantee excludes labour costs, freight costs, service costs and any incidental and consequential damages. Do not attempt to repair or service this product as this will invalidate the warranty.

Under some unusual circumstances the presence of high levels of radio spectrum pollution may result in the batteries within the CAVIUS device not lasting as indicated in the product sheet. Radio spectrum pollution comprises transmissions inside the band allocated for alarm devices such as the CAVIUS devices. Such transmissions may activate the receiver inside the devices for a longer time than is normal in standby.

This is not a specific problem for CAVIUS devices but for all similar radio linked technology powered by batteries. The limited warranty will not cover the battery life period indicated in the product sheet in these situations.

This warranty is in lieu of any other warranty either expressed or implied.

You can register your CAVIUS devices on our website.



www.cavius.co.nz | www.cavius.com.au

3107-7201-00

CAVIUS

THE WORLD'S SMALLEST HEAT ALARMS

REGISTER YOUR CAVIUS PRODUCT WITH US
& GO INTO THE DRAW TO WIN

FIND DETAILS AT
[CAVIUS.CO.NZ/WARRANTY](https://cavius.co.nz/warranty)