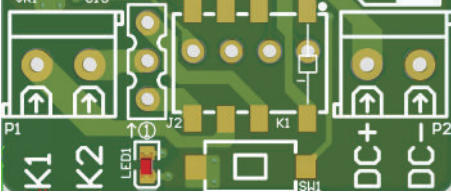




# WATCHMAN

## Watchman Wireless Relay Switch

Model: AJ-K102



### Functional Description

The Watchman Relay Switch is a low voltage, innovative solution that allows you to integrate Watchman smoke and heat alarms into any existing home security system or isolate power on a particular circuit.

**Power Supply Range:** 6V – 36V

#### DC+ & DC-:

Power supply connection interfaces.

DC+: is connected to the positive power supply.

DC-: is connected to the negative power supply.

#### K1 & K2:

Normally Open (NO) and Normally Closed (NC) wiring interface of the relay, regardless of positive or negative.

#### J2:

NO and NC adjustment position.

Pins 1 & 2 are NO state.

Pins 2 & 3 are NC state.

Use the yellow jumper cap to adjust to either NO or NC state.



#### LED1:

Will illuminate to indicate pairing success status.

#### SW1:

Is the 433MHz pairing touch switch.

### Centre Rectangle Button:

This button is used when conducting the pairing, testing and clearing data process.



### How To Connect Alarms and Relay

You can use any smoke or heat alarm from the system. Place the alarm into pairing mode (see alarm's user guide on how to pair alarms). On the AJ-K102, press and hold the centre rectangle button for 1-2 seconds to enter the pairing receiving mode.

The relay's LED will flash red every 0.5 seconds for 1 minute while it waits for the pairing code from the alarm. Once pairing is successful, the LED will flash red twice quickly.

If you need to clear the data on AJ-K102; press and hold the centre rectangle button for 2 seconds and the LED will flash red twice, release the button and the LED will flash red twice slowly to indicate that the data has been cleared.

## Self-Test Mode

### Relay Self-Test:

To test power is going to the relay, press the centre rectangle button, the LED will illuminate for 10 seconds, then will turn off and the relay will return to normal operation.

### Interconnection Self-Test:

Press the test/hush button on any one of the smoke or heat alarms in the system, the AJ-K102 LED will illuminate for 10 seconds, then will turn off and the relay will return to normal operation.

## Alarm & Hush Mode

### Alarm Mode:

When either a smoke or heat alarm is activated, the AJ-K102 receives the alarm signal, and the LED will illuminate red and the relay will operate.

### Hush Mode:

When the smoke or heat alarm is hushed, the AJ-K102 receives the alarm hush signal and the LED will turn off, and the return to normal operation. The relay LED will continue to illuminate and operate until the hush signal from an alarm has been received.

### IMPORTANT:



Do not use a power supply voltage higher than the specified range.

## Warranty:

The contents of this manual are subject to change without prior notice. For the latest information, please contact the manufacturer. The manufacturer is not liable for any damage caused by errors in this manual and is not liable for damages caused by the provision or use of this manual.

The manufacturer can never be made liable for loss and /or damage of whatever nature, including incidental and / or consequential loss, arising from the fact that the signal from the smoke alarm did not sound during smoke or fire.

## Distributor:

If you have any questions about the product or require any assistance, please contact:

On Point Distribution Partners Ltd  
58a Poplar Lane  
Papamoa 3187  
New Zealand  
[www.watchmanalarms.co.nz](http://www.watchmanalarms.co.nz)